

Mobility Management Service

n4a 7-31-14

Area Agency on Aging 1-B

Roberta Habowski

Mobility Project Manager

Overview

- One Call One Click
- Toll-free phone line- multilingual
- Interactive web site – can search for providers, request a ride, get information
- Assist with ADA applications
- Launched May 2012
- Does not supply transportation



Key Players for Getting Started

- MDOT – supported first work on educating seniors
- Various partners throughout
- To develop Mobility Management Service – Jewish Family Service (JFS), public transit provider, local MPO, Regional Elder Mobility Alliance (REMA)
- Networking is very important – consider all agencies even if transportation is not their focus

First Steps

Full year of Research and Development

- Best Practices
- National Organizations
- Local Organizations
- Budget
- Technology needs
- Branding/Marketing Plan



Connecting Seniors & Adults with Disabilities to Rides

Call Us to Request a Ride



Toll-Free! 1-855-myride2 1-855-697-4332

We are multilingual!

Click here to email us with questions or feedback



Home

myride2.com helps seniors and adults with disabilities in Oakland, Macomb and western Wayne counties in Michigan find transportation. Need a ride? We'll help you coordinate your transportation options.

Click here for Driving Tips and How to Help an Older Driver

Click here to Learn about Mobility Management

Click here to Learn How to Ride the Bus & Smart Bus Schedule

Click here to Learn about the Regional Transportation Plan

Login to my Account

Create an Account

FAQs & Glossary

Request a Ride Online

or call: 1-855-myride2 (1-855-697-4332)

Note: myride2 is not a direct transportation provider. Our agents will be arranging transportation on your behalf with a direct transportation provider.

You are submitting a request for a ride. This submission does not guarantee a ride.

Date of Ride

MM/DD/YYYY

Find a Ride Provider

Search here for transportation providers in your area. You will get a printable list of options and details on the services provided. You can contact providers directly, or call us at 855-myride2 (855-697-4332) with any questions, or to help you schedule a ride.

Zip Code for Service

Zip Code

Find

Special Needs Door to Door ?

Curb to Curb ?

Mobility Management

```
graph TD; MM([Mobility Management]) --> A[Mobility Options Counseling Driving/driving retirement]; MM --> B[Transportation Referrals - One on one assistance to find best option.]; MM --> C[Schedule Rides- variety of providers]; MM --> D[Travel Training- One on one or Group trainings]; MM --> E[Advocacy];
```

**Mobility
Options
Counseling
Driving/driving
retirement**

**Transportation Referrals –
One on one assistance to find
best option.**

**Schedule
Rides-
variety of
providers**

**Travel
Training-
One on one or
Group
trainings**

Advocacy

myride2

A green graphic element that starts as a thin line under the 'y' in 'myride2', loops around the bottom of the 'y', and then curves upwards and to the right, ending as a thick, arrow-like shape pointing towards the right.

Travel Training

www.myride2.com

855-697-4332

Oakland • Macomb • Wayne





Expand the services of the Area Agency on Aging 1-B's (AAA 1-B) mobility management service, myride2, by developing and implementing a travel training program for seniors and adults with disabilities

Travel training will empower seniors and disabled adults with the necessary tools to use public transportation with confidence.

Introduce and/or familiarize seniors and disabled persons with their available community transportation resources.

Increase abilities to independently engage in community activities.





Connecting Seniors &
Adults with Disabilities to Rides

Contact us today to find
transportation options for you.



Call us toll-free at
855-myride2
(855-697-4332)

Or visit us online at
www.myride2.com

myride2.com also provides information on:

- Older Driver Safety & Helpful Tips
- NEW** • Travel Training - how to use
SMART bus services
in group or one-on-one settings

myride2 is supported by the Area Agency on Aging 1-B,
Disability Network Oakland Macomb and SMART



Connecting Seniors &
Adults with Disabilities to Rides

Transportation Help is a Call or Click Away

myride2 is a free service that helps seniors and adults with disabilities living in Oakland, Macomb and western Wayne counties find transportation options with just one phone call or mouse click.

Mobility Specialists will work with you and local transportation providers to find the best options for you.



Call us toll-free at
855-myride2
(855-697-4332)

Or visit us online at
www.myride2.com



Community Partnerships

Inclusive Coordinated Transportation Partnership





Senior Mobility Outreach Project

Purpose:

Educate and Engage seniors and people with disabilities in transportation policy decision making in Southeast Michigan

Regional Transportation Authority

RTA DEVELOPED FOR SOUTHEAST
MICHIGAN (2012)

Formed a Citizen's
Advisory Committee
(CAC)





**Harriet
Tubman
Center**



Harriet Tubman Center/Metro Coalition of Congregations

- MCC looking for topics that would have a positive impact in their communities
- Youth members suggested transportation equity
- Better Transit/Better Business

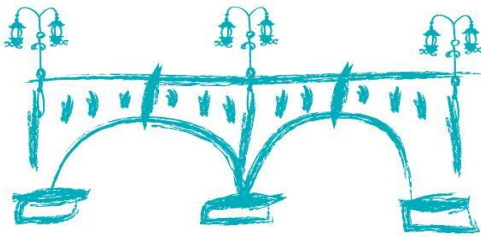
- ❖ AAA 1-B spoke at MCC meeting
- ❖ Chance encounter with AAA 1-B CEO and HTC
- ❖ A new partnership is born
- ❖ New partnerships – A Coalition for Transit



BUILD TRANSIT **BUILD BUSINESS**



Join us in partnership with transit advocates, stakeholders and the Regional Transit Authority (RTA) to ensure that we plan a transit system that creates economic opportunity and gets people where they need to go.



SENIOR POWER DAYS *on Belle Isle*

FOR SENIORS LIVING IN DETROIT | WAYNE | OAKLAND | MACOMB

PRESENTED BY





Build Transit, Build Business Outreach Campaign

- 27 member leadership team recruited
- 388 people to respond to the invitation
- 323 actually attended the event
- 6 sector meetings planned
- 88 community meetings requested with the RTA

- Growth of awareness about the project and its goals
- Speed with which project leaders could connect with the alliance of businesses and organizations
- The pure passion for community support and improvement brought to the project

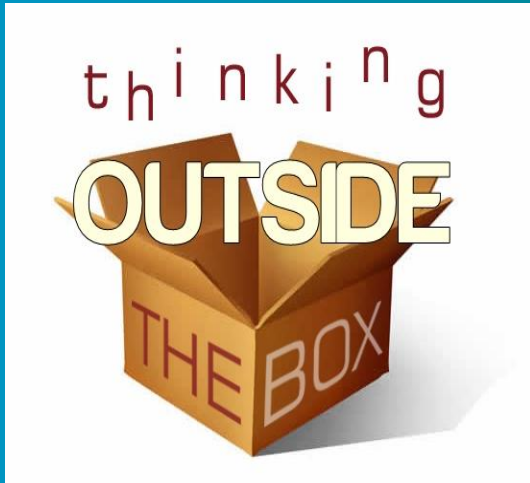
Community Connections

Connect with organizations already working with older adults

- AAAs
- Social services
- Human service providers
- Healthcare Community
- Centers for Independent Living



Neighborhood Associations
Environmental Groups
Business Leaders
Educational Institutions
Faith Based Groups
Business Community
Advocacy Groups



Network Network Network

