

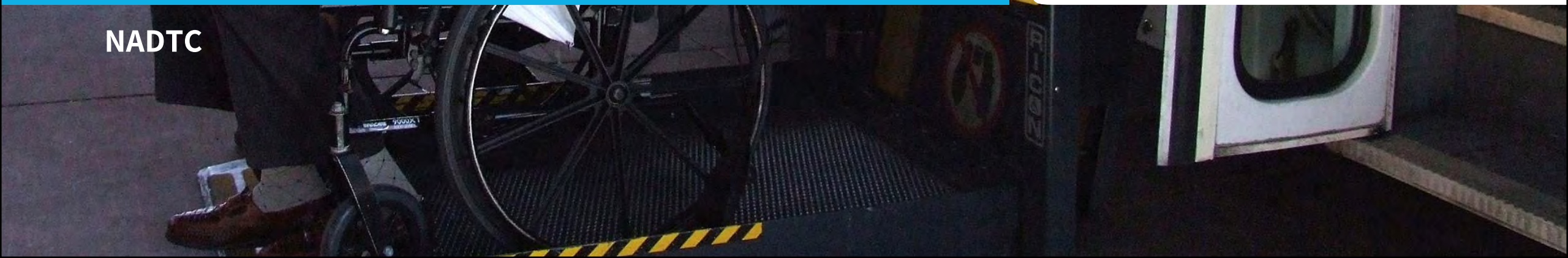


Project MILES: Multi-Provider Coordination in Larimer County



North Front Range
Metropolitan
Planning
Organization

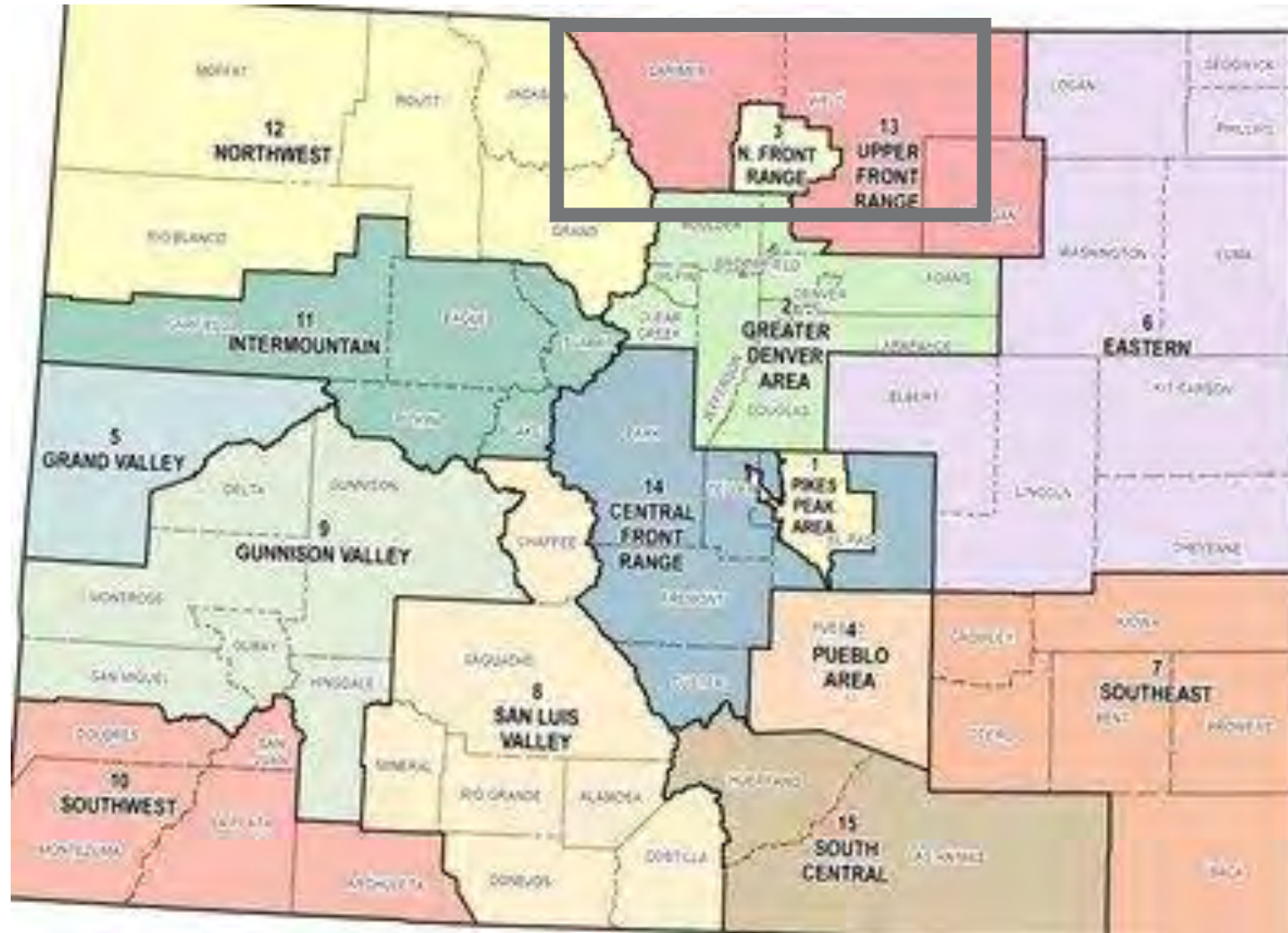
NADTC

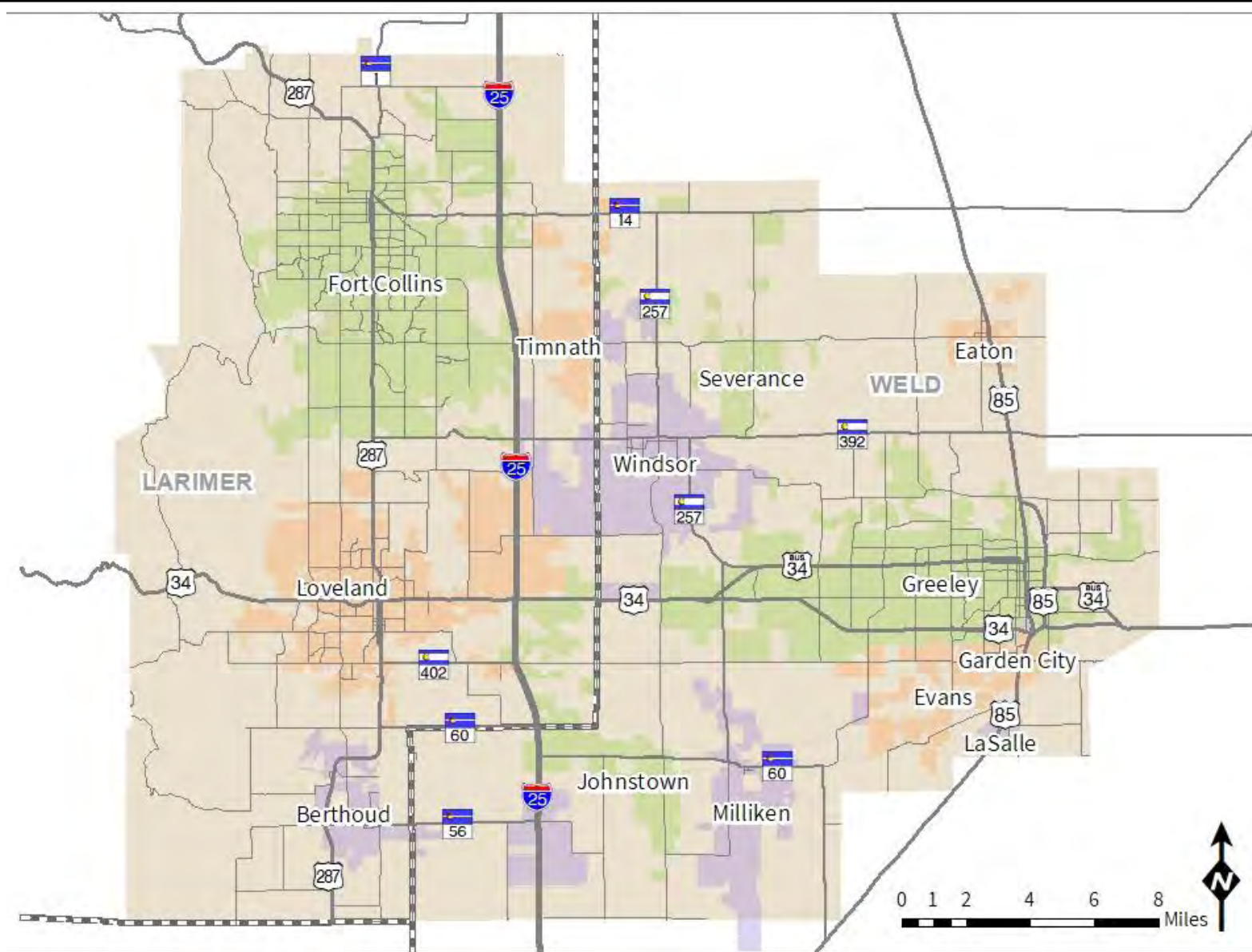


AGENDA



1. Context
2. Planning
3. Building Consensus
4. Next steps
5. Questions

CONTEXT: COLORADO



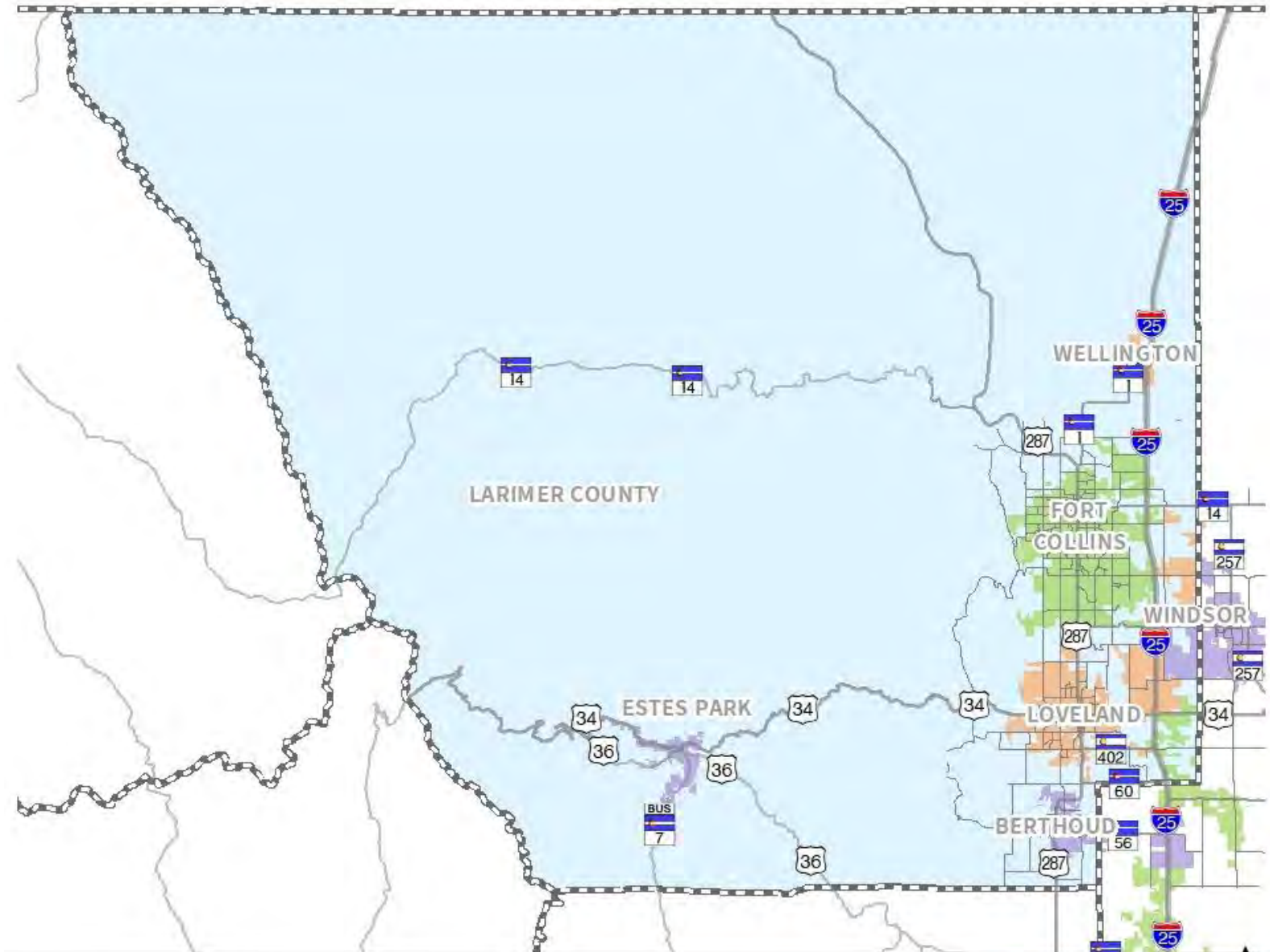


Legend


-  County Boundary
-  NFRMPO Planning Area

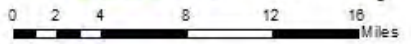
May 2020
Sources: CDOT, NFRMPO



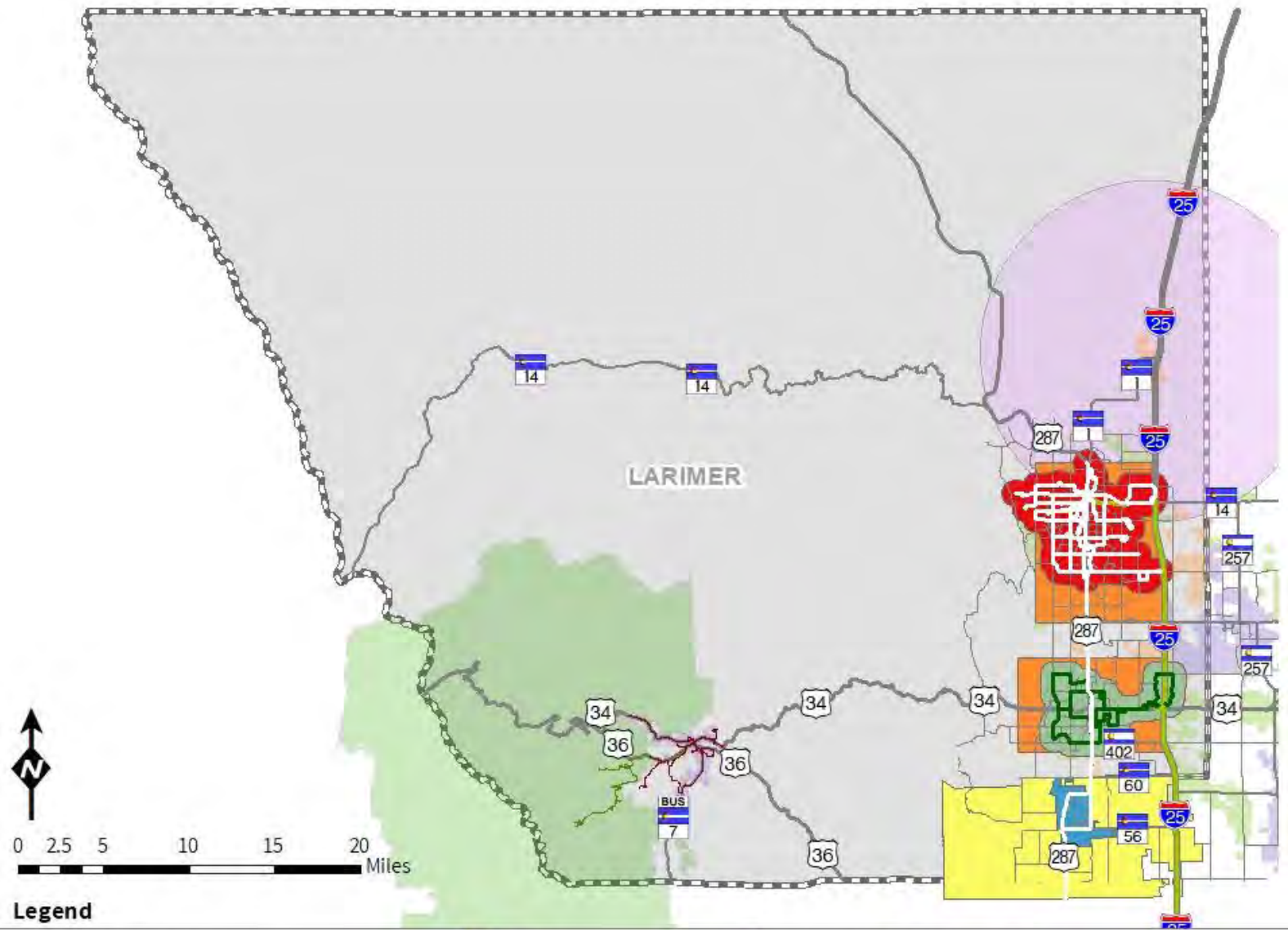


Legend











 Larimer County



CONTEXT: TRANSPORTATION PROVIDERS



Legend

-  Estes Transit
-  Rocky Mountain National Park Transit
-  BATS
-  COLT Dial-a-Ride
-  RAFT
-  SAINT
-  Transfort Dial-a-Ride
-  Wellington Senior Center Buffer
-  RMNP Boundary
-  County Boundary

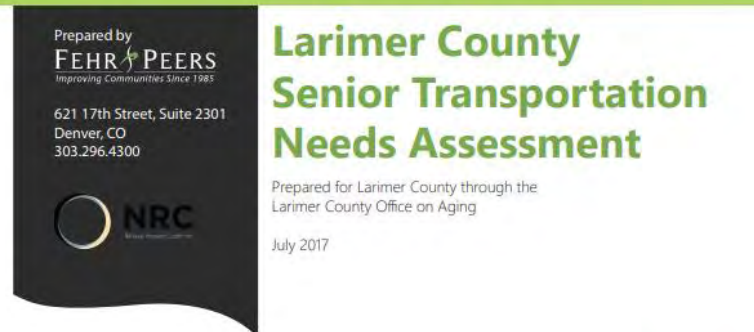
June 2020
Sources: CDOT, NFRMPO



PLANNING



2016



2017

Table 4: Service recommendation prioritization

Recommendation	Benefit				Sum of benefit scores	Cost		
	Effectiveness		Feasibility			Cost-effective	Total cost and funding sources*	Sum of cost scores
	Benefits a large portion of the senior population	Addresses population of greatest need	Ease of implementation	Scalable/phaseable				
On-demand paid services	3	2	2	2	10	1	1	2
Volunteer driver program	2	3	1	2	9	3	3	6
Expansion of existing service	2	2	3	1	8	2	2	4
Family and friend subsidy	2	2	3	3	8	2	2	4
Fixed route shuttle	1	1	1	1	4	1	2	3

Table 5: Program recommendation prioritization

Recommendation	Benefit				Sum of benefit scores	Cost		
	Effectiveness		Feasibility			Cost-effective	Total cost and funding sources*	Sum of cost scores
	Benefits a large portion of the senior population	Addresses population of greatest need	Ease of implementation	Scalable/phaseable				
Education: marketing	3	2	3	3	11	3	1	4
Dispatch: call center	3	2	3	2	10	2	2	4
Education: senior commission/transit ambassador	1	3	2	3	9	1	1	2
Education: travel trainings	1	2	2	3	8	1	1	2
Dispatch: online platform	2	2	2	2	8	2	2	4

Key:
 1 (Low)
 2 (Medium)
 3 (High)

CONSENSUS BUILDING



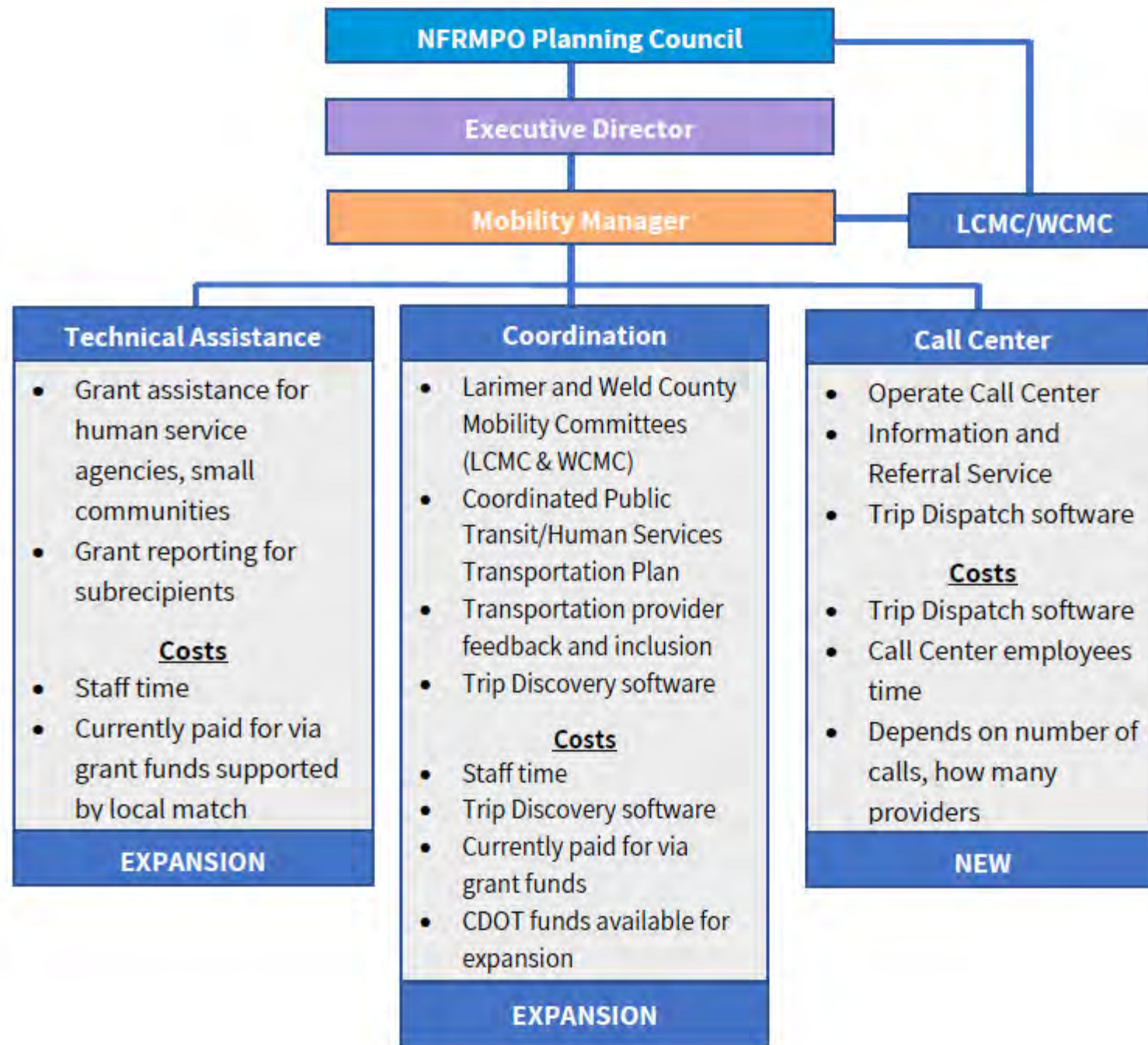
CONSENSUS BUILDING



CONSENSUS BUILDING

Larimer County Senior Transportation Implementation Plan





CONTACT AND FOLLOW-UP



Alex Gordon, PTP
Transportation Planner/
Mobility Coordinator
(970) 289-8279
agordon@nfrmpo.org

<https://nfrmpo.org/mobility/ococ-project/>