

Team Effort: When Transportation Providers, AAAs, and Communities Work Together to Support Housing

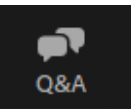
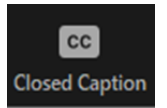
May 6, 2025

nadtc



Instructions for Zoom Webinar Participation

- All participants are muted.
- The session is being recorded. All materials including the recording will be put on the [NADTC](#) website.
- Closed captioning is available by clicking on the cc button.
- Please use the Q & A button for questions for the presenters.
- Use the chat for general comments or technical assistance.



National Aging & Disability Transportation Center

Our Mission:

To promote the availability of accessible transportation options that serve the needs of Older Adults, People with Disabilities, Caregivers, and Communities.



National Aging & Disability Transportation Center

What We Provide:

- Technical Assistance & Training
- Publications & Resources
- Partnership & Coordination
- Community Grants

Agenda



Deborah Stone-Walls, Chief
Programs and Services, USAging, Washington, D.C.



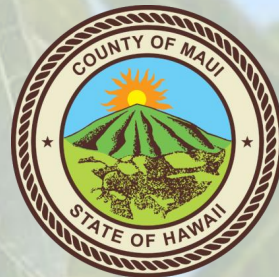
Rowena Dagdag-Andaya, Director
County Office on Aging, Maui, HI

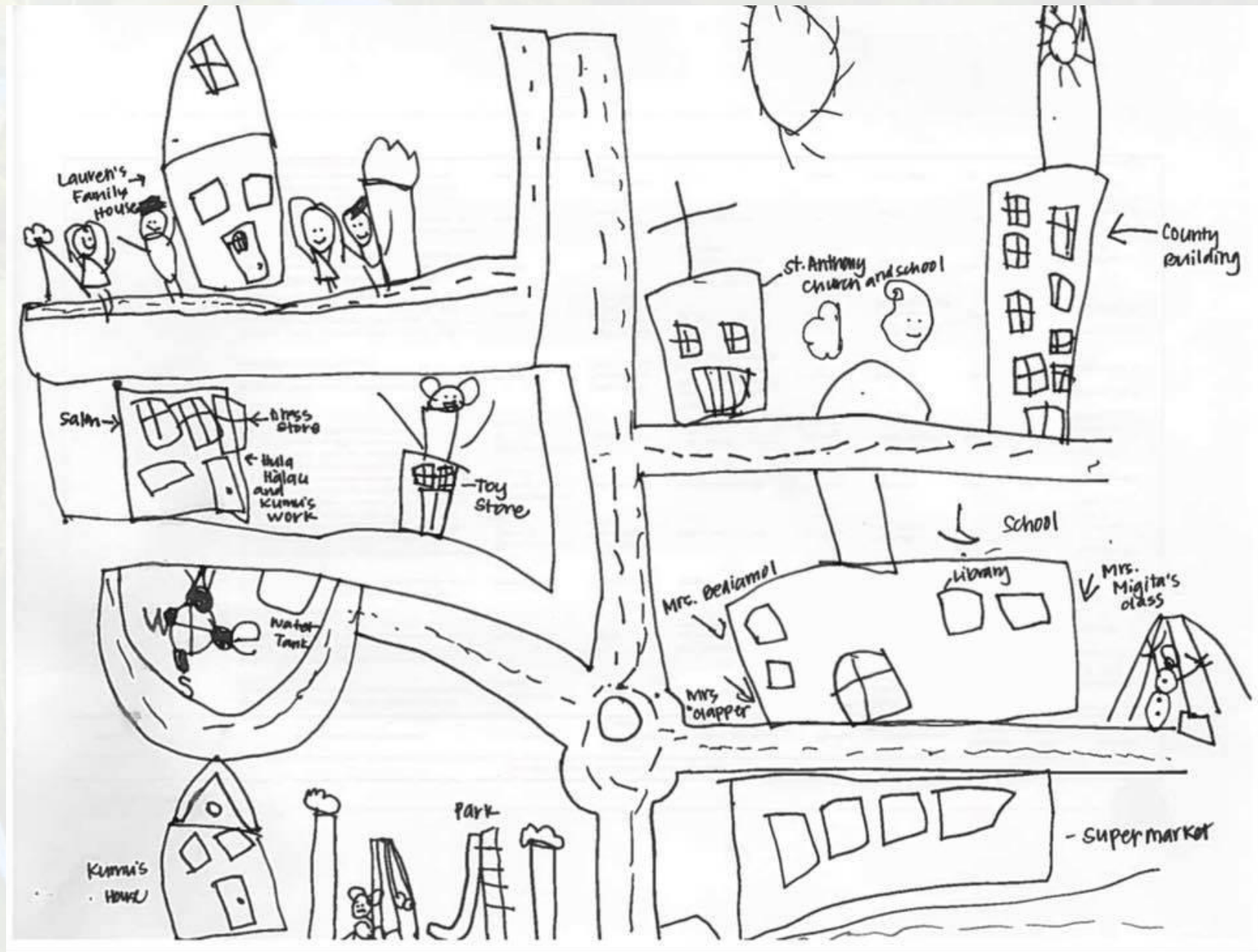


Debbie Cabebe, CEO
Maui Economic Opportunity (MEO) Inc., Maui, HI

The Critical Link Between Transportation and Senior Housing

Presented by Rowena Dagdag-Andaya
County Executive on Aging, Maui County





Why Transportation and Housing Must Be Connected

Transportation is a social determinant of health

- Enables independence, access to healthcare, food, social and civic engagement
- Crucial for aging in place with dignity

Housing + Transit = A Package Deal

- Without transit access, senior housing can isolate rather than support residents
- Site location matters: Is it near a fixed route? Is paratransit feasible? What's the walkability?

AAA Engagement in Housing Review Process

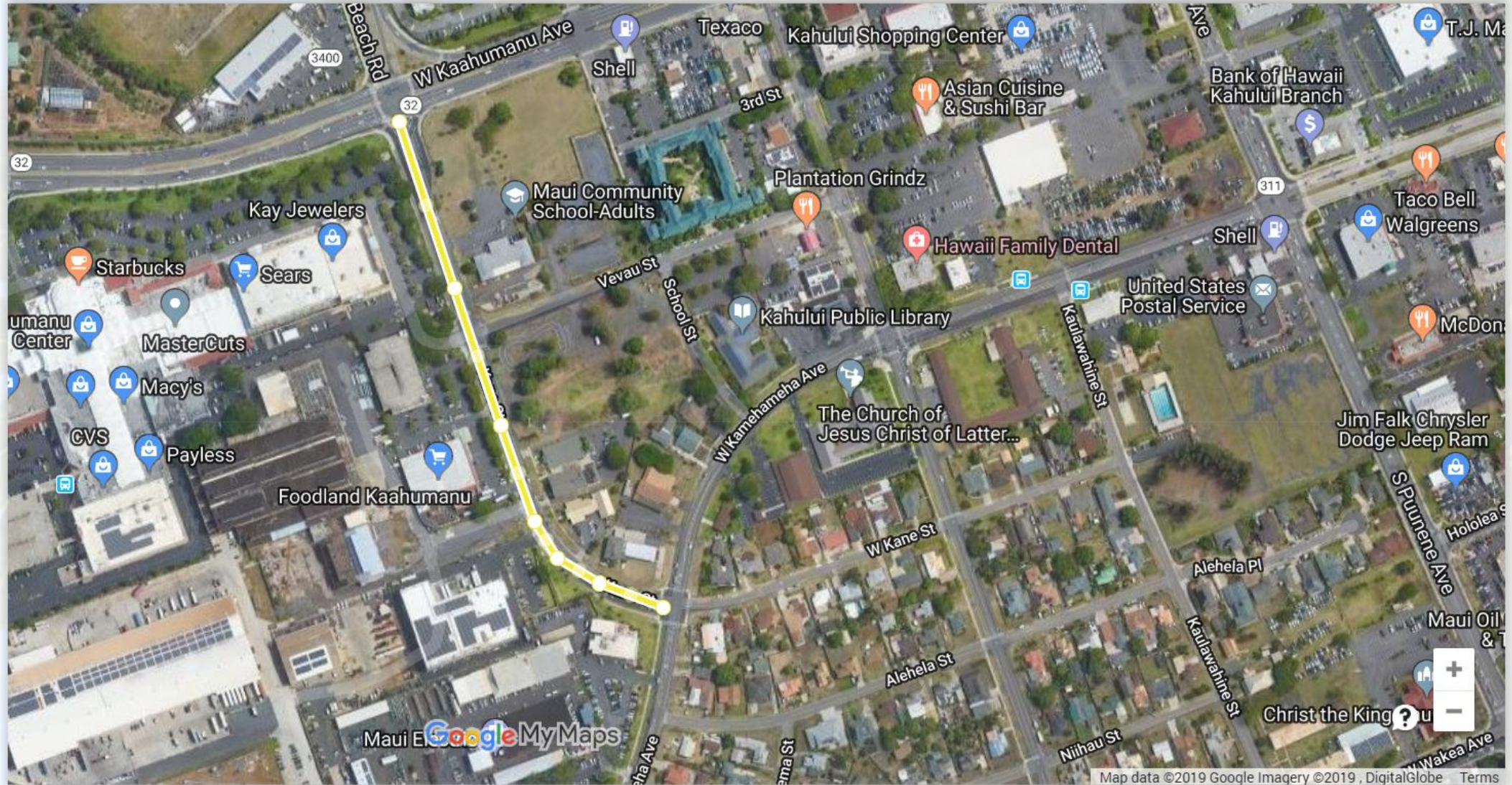
Housing decisions happen early—get a seat at the table

- Zoning changes, Environmental Assessments (EA/EIS), and Community Plan updates shape where and how seniors will live
- These decisions impact walkability, transit access, and long-term livability for kūpuna

Opportunities for input vary by municipality

- In counties like Maui, agencies can weigh in during **Affordable/Workforce Housing reviews**
- Others may include Planning Commissions, County Councils, or State Land Use bodies

Kane Street Complete Streets Makeover



Develop Kane St. and Vevau St. as a Complete Streets

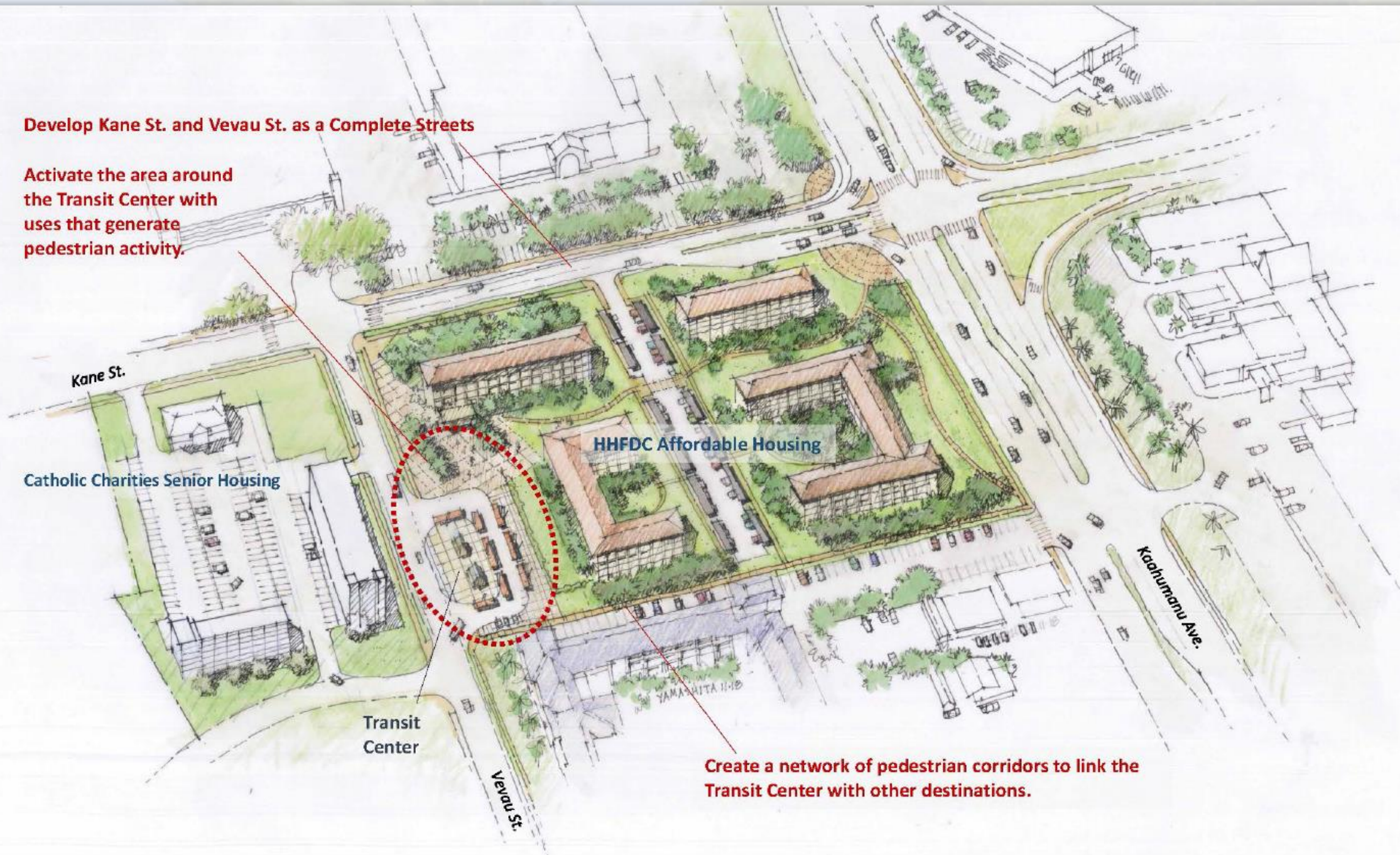
Activate the area around the Transit Center with uses that generate pedestrian activity.

HHFDC Affordable Housing

Catholic Charities Senior Housing

Transit Center

Create a network of pedestrian corridors to link the Transit Center with other destinations.



AAA Engagement in Housing Review Process

- **AAAs can provide critical aging-focused input**
- Recommend proximity to transit, grocery stores, clinics, parks, or senior centers
- Call for universal design, ADA access, and service coordination (e.g., transportation, meal programs)

Your input can shift outcomes

- A well-timed letter or comment can influence design, location, or required mitigations
- Builds cross-sector partnerships with Planning, Housing, and Public Works

County and Interagency Collaboration

- Partners: Public Works, Housing, Human Concerns, Planning, Transit, MEO Inc., Na Hoaloha
- Review housing for walkability, ADA access, bus proximity
- Refer clients to MEO and Na Hoaloha
- Coordinate with Kaunoha Senior Services on service authorizations
- Advocate co-location near clinics, stores, parks, etc.

Office on Aging's Role in Connecting Seniors to Rides

- Assess clients for service eligibility
- Refer rides to MEO (medical, shopping, social, etc.)
- Monitor data and participant feedback
- Collaborate during emergencies in assisting evacuation efforts for mobility-impaired seniors

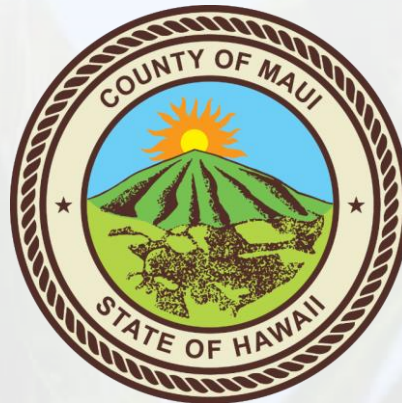
MAHALO

MCOA.ADRC@co.maui.hi.us

808-270-7755

Mauicountyadrc.org

<https://www.mauicounty.gov/255/Office-on-Aging>



Maui Economic Opportunity, Inc.



Debbie Cabebe, SHRM-SCP Chief Executive Officer

Transportation in Maui County



From the Beginning

- o 1969 - federal Community Service Block Grant (CSBG) funding



Accessibility

o First Wheelchair Accessible Van



MEO Transportation

- o Funded by the County of Maui
- o Seniors, youth, persons with disabilities



Maui County

o Maui Island, Molokai and Lanai



First Public Transit

- o Started in 1992
 - o Two loop routes in Central Maui operated by Maui Economic Opportunity (MEO)
 - o Same route in opposite directions by donation



Holo Ka`a

o August 2002



A Joint Venture

- o The County of Maui, Akina Aloha Tours and MEO
 - o Bus service for South, West, and Central Maui



Get on the Bus

- o Rider promotion



Low Ridership

- o Service reduced in July 2004 to five routes
 - o three operated by Roberts Hawaii,
 - o one by Akina Aloha Tours,
 - o one bidirectional route by MEO



Short Range Transit Plan

- o 2005 (SRTP)
 - o Evaluated demand and service conditions; developed the routes, including service to Upcountry Maui
 - o Developed the branding and logo of Maui Bus; operations began in 2006



Public-Private Partnership

- o The Maui Bus is the public transportation service for the island of Maui
- o Public-private partnerships between Maui County Government, MEO and Roberts Hawaii



Operators

- o Fixed and commuter routes - Roberts Hawaii
- o Paratransit services - MEO



MEO Today

- o Maui island, Molokai and Lanai
- o Over 100 vehicles
- o Nearly 3,000 passengers annually



Service Options

MEO Human Services:

- Door-to-Door
- Service throughout Maui County
- Limited Service on weekends and holidays



Maui Bus ADA Paratransit:

- Curb-to-curb
- ¾ mile from each Maui Bus stop
- Daily, based on Fixed Route hours of service



MEO Transportation Services

MEO Human Services:

- Senior Services & Nutrition
- Ka Lima O Maui, Easter Seals & Arc of Maui
- Employment to Work
- Rural Shuttle
- Shopping Shuttle
- Youth Services
- Adult Day Care
- Ala Hou
- Dialysis

Maui Bus ADA Paratransit:

- Curb-to-curb service for persons with disabilities



Sources of Funding



Job Access and Reverse Commute Program (5316)

Enhanced Mobility of Seniors & Individuals with Disabilities - Section 5310

Community Development Block Grant HUD



Helping People. Changing Lives.



Question & Answer

National Aging & Disability Transportation Center

Where to Find Us:

- Website
- Monthly eNews
- Social Media
 - LinkedIn
 - Facebook
 - YouTube

Join our Mailing List!





Email: contact@nadtc.org
Toll-free: 866-983-3222
Website: www.nadtc.org

Find us on Facebook,
YouTube and LinkedIn

